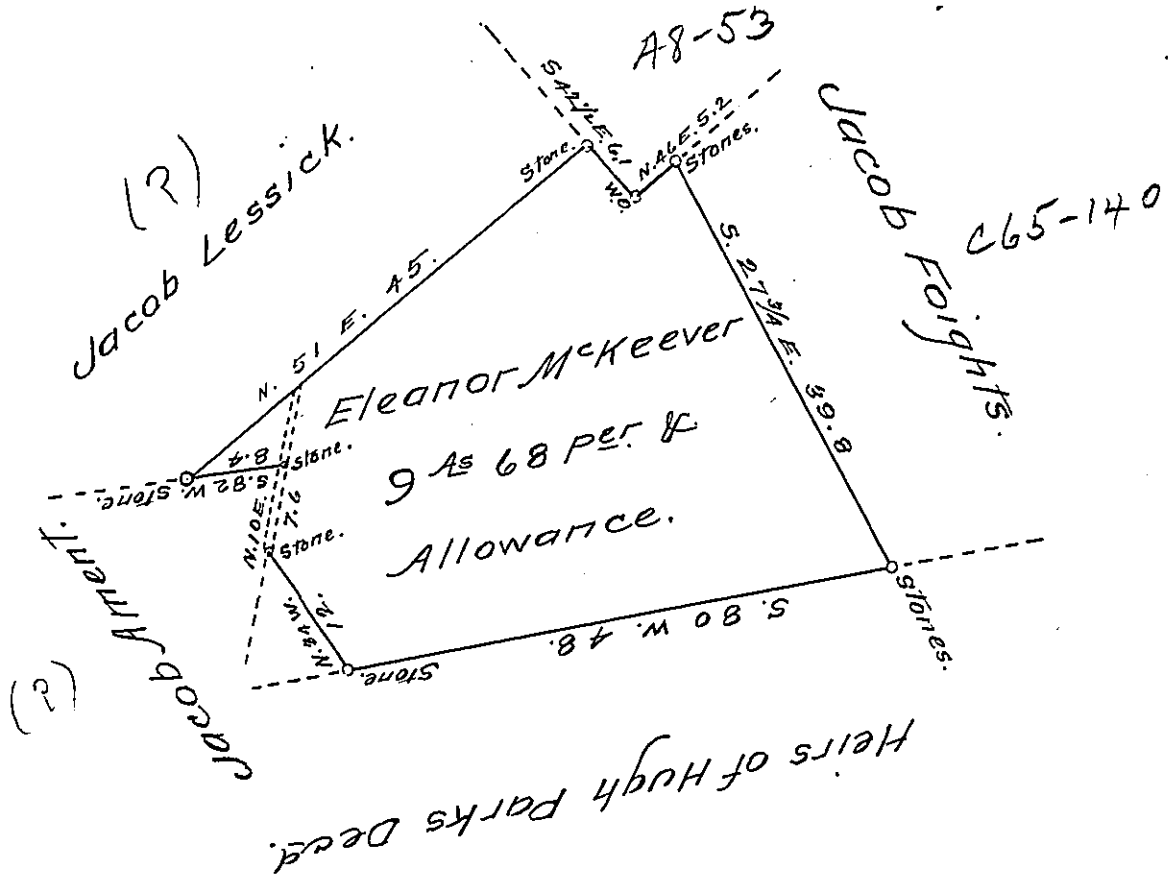


Magnetic Meridian 1° west.

Scale 60 per. to an inch.



August 9<sup>th</sup> 1854.

Surveyed the above described Tract of Land for Eleanor McKeever, Containing Nine acres & Sixty eight perches and allowance for Roads &c. of six per cent. For which a warrant was since Granted to the said Eleanor McKeever, Bearing date 19<sup>th</sup> day of January 1855 - In pursuance of which, I return the Survey hereto by me executed, Situate in Franklin Township, Westmoreland County Penna.

Joseph Greer C.S.

To J. Porter Brawley Esq. }  
 Surveyor General of Penna. }

IN TESTIMONY that the above is a copy of the original remaining on file in the Department of Internal Affairs of Pennsylvania, made conformably to an Act of Assembly approved the 16th day of February, 1833, I have hereunto set my Hand and caused the Seal of said Department to be affixed at Harrisburg, this thirteenth day of March 1908.

*Henry Howell*  
 Secretary of Internal Affairs.